



Santa Clara County Wetlands

by Ron Horii

Santa Clara County Parks and
Santa Clara Valley Open Space Authority Docent

<http://www.rhorii.com/>

AUGUST 2019

The mission of LAFCO is to promote sustainable growth and good governance in the county by:

- Preserving agricultural lands and open space.

- Preserving agricultural lands and open space,
- Cutting urban sprawl,
- Encouraging efficient delivery of services,
- Exploring and building regional opportunities for local sustainability, and
- Promoting public accountability and transparency of local agencies.

Local Agency Formation Commission
of Santa Clara County



Delawareans grow materially enriched and provided with urban services, at amounting a city towards to areas in order to develop and provide urban services within five years.

includes areas where the County and a city have shared responsibility for providing non-urban levels of land use, does not necessarily indicate lands that a city will annex or provide with urban services.

Manuscript accepted for publication 10 September 2004
doi:10.1017/S0022278X04002920



2015年 第1期 总第101期



96% of county population lives here



LAND WITHIN CITY LIMITS

CAMPBELL
p. 22.00
36 mg/oz

CURRENT
p. 82.00
71 mg/oz

GLORIA
p. 55.00
17 mg/oz

LOS ALTOS
p. 31.00
7 mg/oz

LOS ALTOS HILLS
p. 8.50
0 mg/oz

LOS ALTOS
p. 35.00
12 mg/oz

MILITARY
p. 34.00
13 mg/oz

MOUNTAIN
p. 3.00
2 mg/oz

NORFOLK HILLS
p. 41.50
13 mg/oz

MOUNTAIN VIEW
p. 95.52
12 mg/oz

PAULO ALTO
p. 68.32
26 mg/oz

SAN JOSE
p. 1,591.00
181 mg/oz

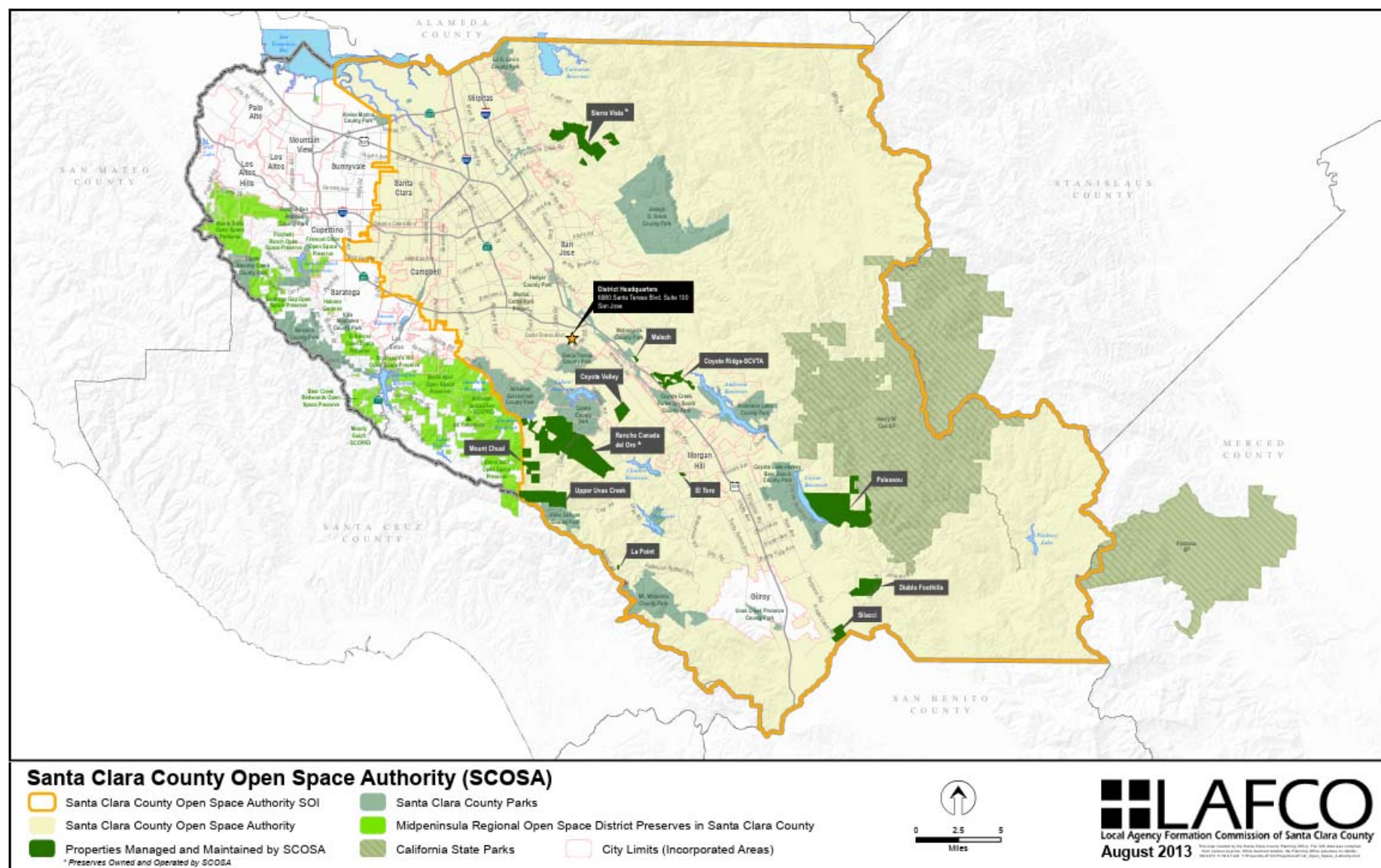
SANTA CRUZ
p. 136.40
0 mg/oz

SARATOGA
p. 31.40
13 mg/oz

SUNNYVALE
p. 155.00
23 mg/oz

Learn more about how LAFCO works for the good of the whole county at www.lafco.net

SantaClaraLAFCO.org



What are wetlands?

Land areas that are saturated or flooded with water either permanently or seasonally.

Types of wetlands:

Inland wetlands: Marshes, wet meadows, vernal pools, lakeshores, riverbanks, floodplains, and swamps.

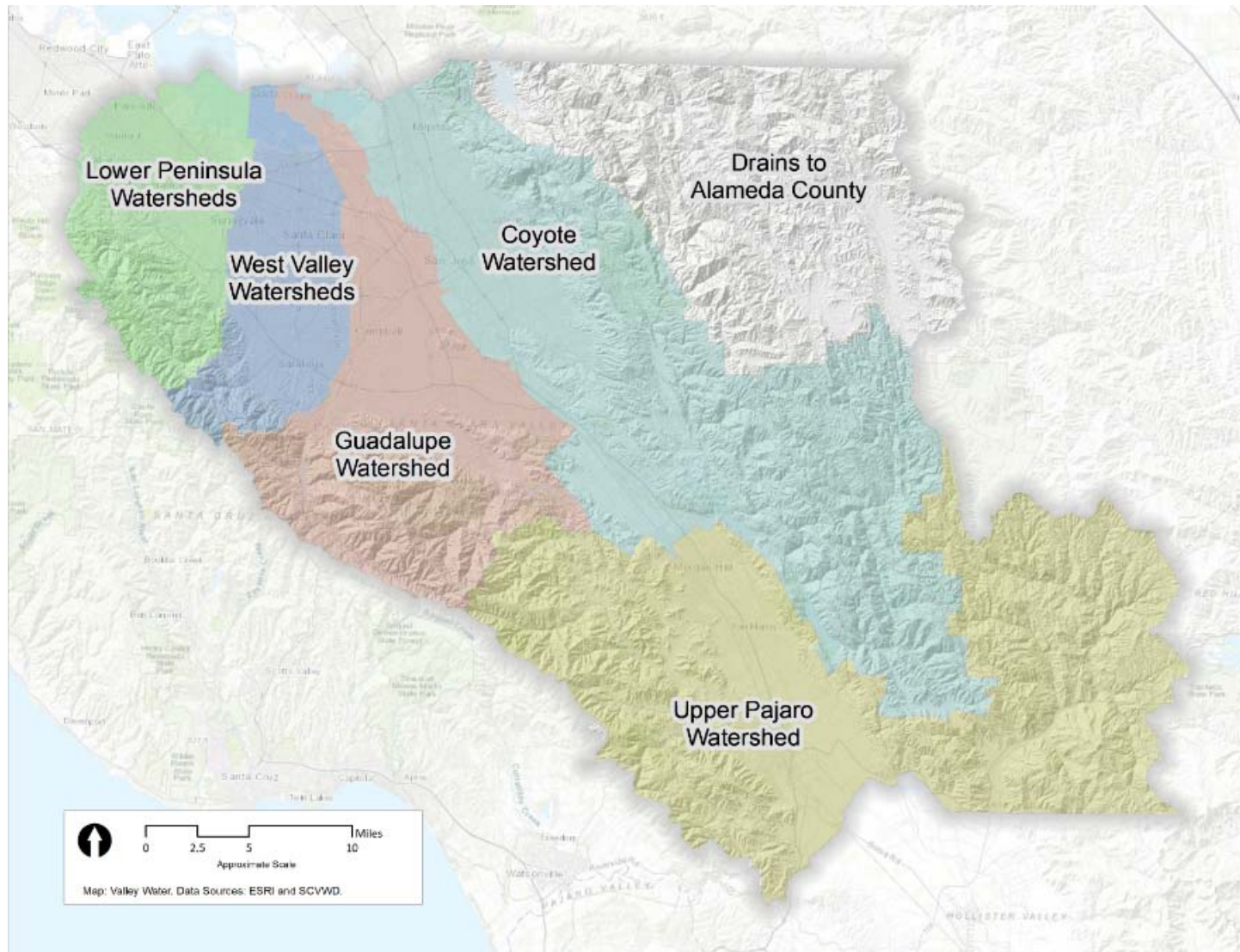
Coastal wetlands: Saltwater marshes, estuaries, and lagoons.

Human-made wetlands: Canals, ponds & lakes: water storage, percolation, fish, farm, landscaping, recreational, and salt evaporation.

Why are wetlands important?

- **Freshwater sources for human use.**
- **Support life, biodiversity.**
- **Water source for wildlife, migrant and resident.**
- **Habitat for rare plants and animals.**
- **Food sources: agriculture, aquaculture.**
- **Carbon storage.**
- **Flood protection.**
- **Groundwater recharge.**
- **Filtration of rainwater runoff.**
- **Fire risk reduction.**
- **Recreation.**

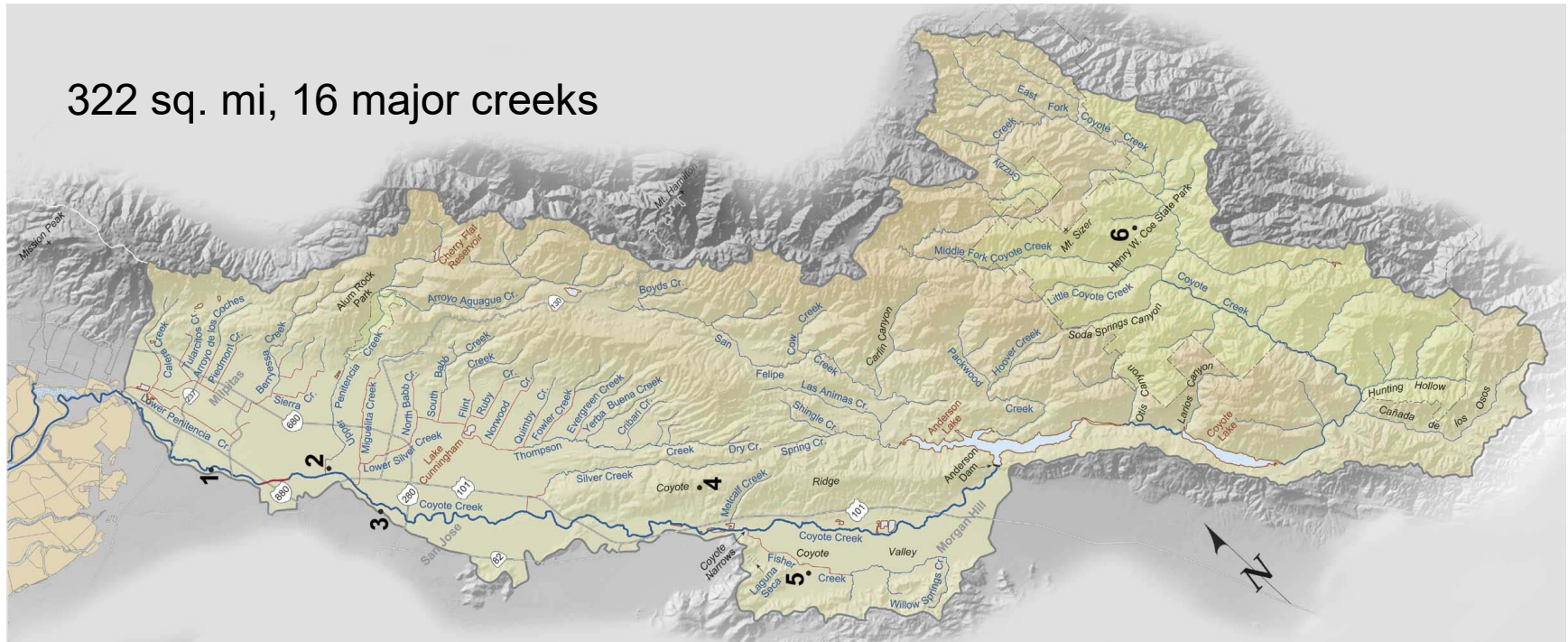
World Wetlands Day is celebrated on February 2 of each year to raise awareness of wetlands around the world, designated by the UN in 2021.



Freshwater Wetlands: Watersheds

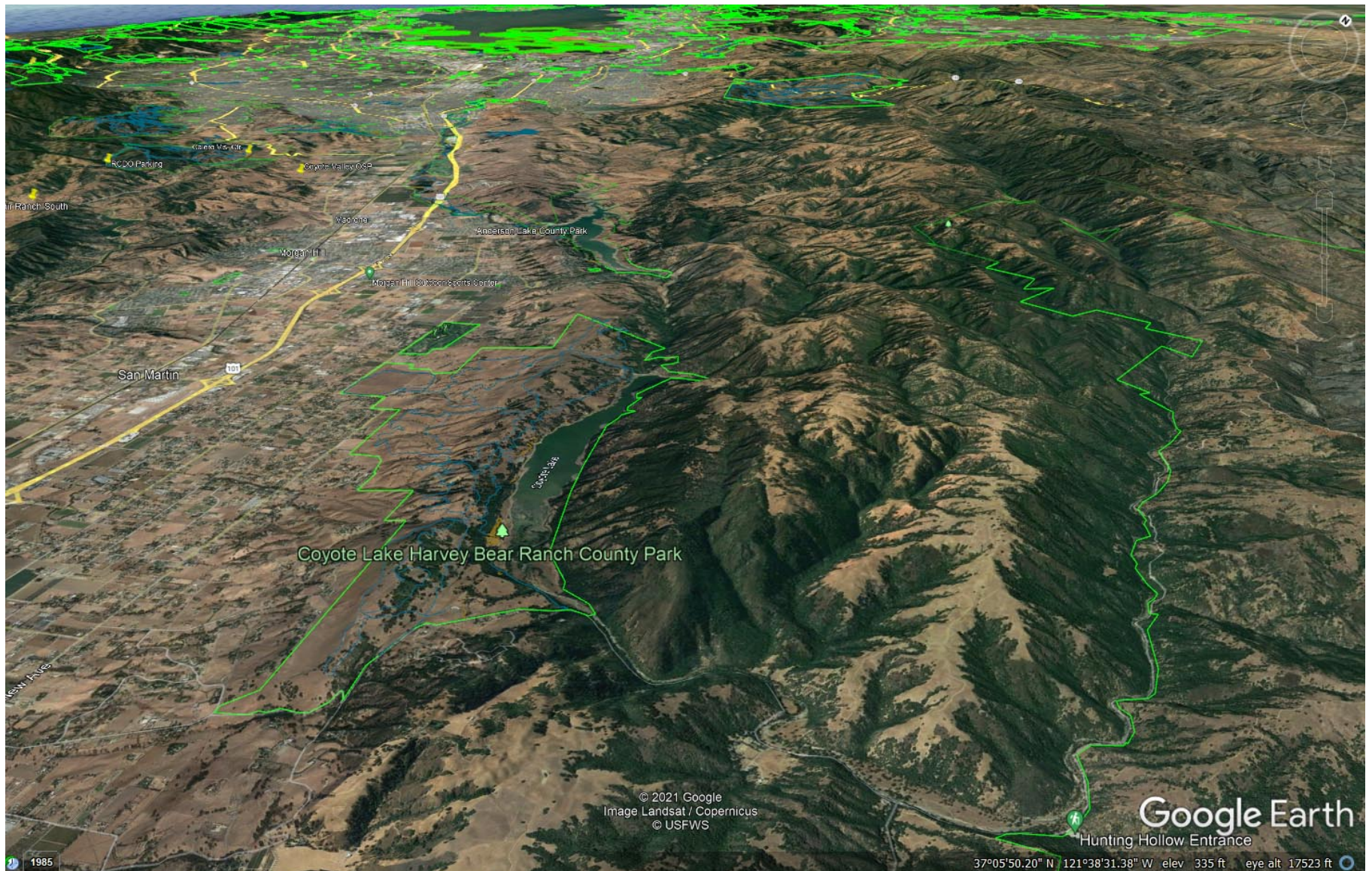
Source: Valley Water

322 sq. mi, 16 major creeks



Coyote Creek Watershed Map

Source: Oakland Museum of California



Upper Coyote Creek Watershed From Palassou OSP



Coyote Creek, Palassou OSP (3524 acres), 6/6/09



Coyote Creek Above Coyote Lake from Mummy Mountain Trail 3/29/21



Coyote Lake and Marsh from Mummy Mountain Trail 4/7/12



Nesbit Ridge from Ed Willson Trail, Coyote Lake 11/10/12



Anderson Lake Bridge 12/26/11



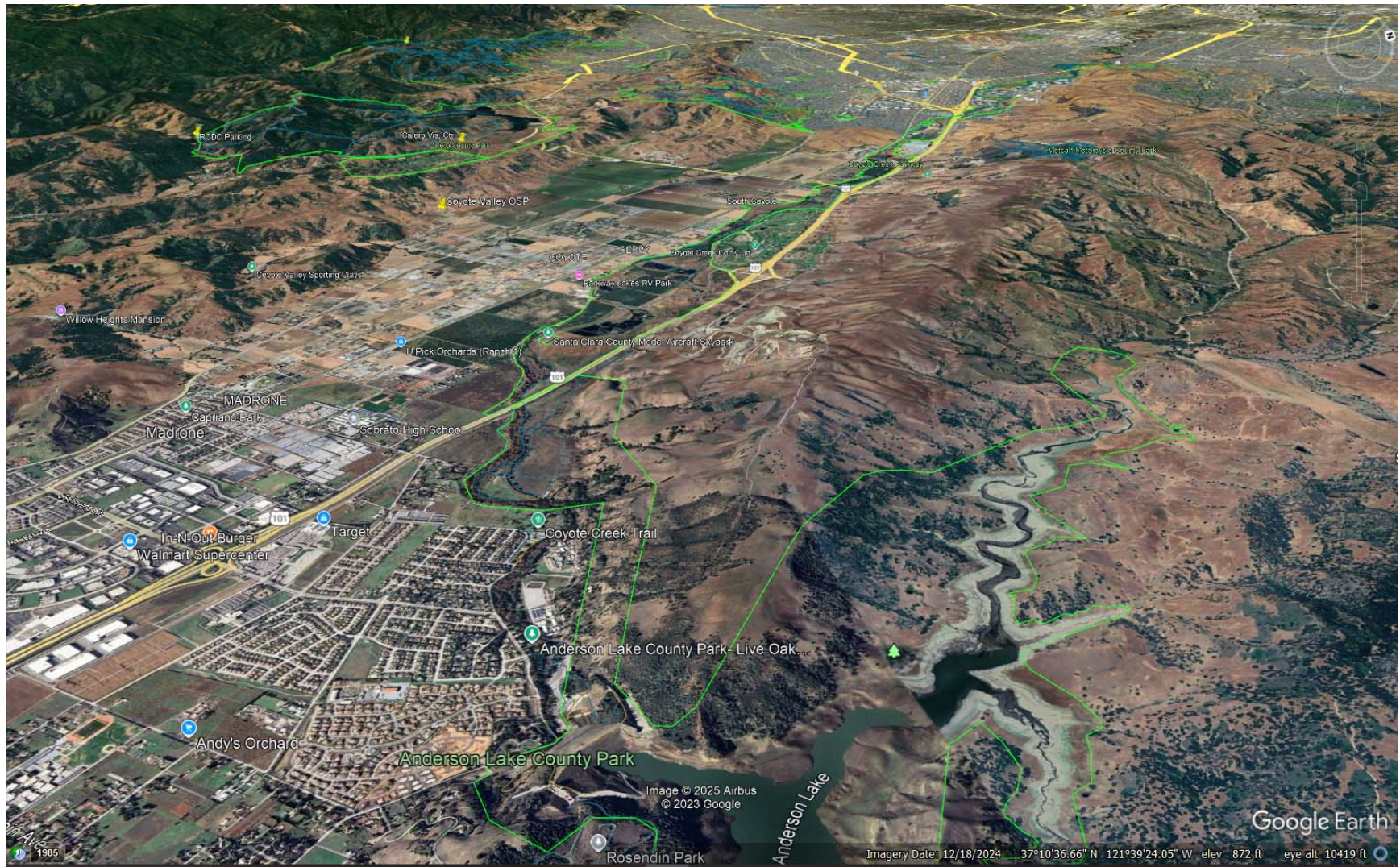
Anderson Lake from Rosendin Park 11/25/11



Anderson Lake from Rosendin Park 1/14/17



Rosendin Park Pond 1/14/17



Coyote Creek Watershed From Anderson Lake



Coyote Creek, Anderson Lake CP 9/26/21



Coyote Creek BioBlitz, Anderson Lake CP 9/26/21



Bald Eagle on Coyote Creek Trail, 2/23/21



Ogier Pond, Coyote Valley 6/20/21



Coyote Creek by the Coyote Creek Golf Club 5/2/21



Coyote Valley OSP 2/17/21



Fisher Creek, Coyote Valley OSP 2/17/21



Meadow Restoration, Coyote Valley OSP 3/19/17



Spreckels Hill, North Coyote Valley CA 1/8/22



View South From Spreckels Hill 1/27/24



Spreckels Hill View NW, North Coyote Valley CA 1/8/22



Coyote Creek Trail Crossing by Bailey Ave. 11/25/09



Coyote Ridge OSP Hike, above Laguna Seca 4/8/18



North Coyote Valley from Coyote Ridge OSP 4/7/19



Serpentine Bog, Coyote Ridge OSP 3/14/20



Laguna Seca From Santa Teresa Park 1/17/23



View From Laguna Seca Dam, North Coyote Valley 12/14/19



Laguna Seca, North Coyote Valley 2/27/17



Fisher Creek, North Coyote Valley 2/27/17



Laguna Seca 12/14/19



View of Shingle Valley, Coyote Ridge OSP 3/20/16



View of Anderson Lake, Coyote Ridge OSP 3/20/16



Center of Santa Clara County Marker on Coyote Creek 1/15/25



Metcalf Rd. Bridge from Coyote Creek Trail Bridge 4/5/21



Coyote Creek Percolation Pond Boat Docks 4/5/21



Coyote Creek Percolation Pond Dam 2/18/19



Coyote Creek Watershed From Hellyer CP



Cottonwood Lake, Hellyer CP 5/5/21



Cottonwood Lake, Hellyer CP 1/9/10



Birds on Cottonwood Lake, Hellyer CP 2/5/21



Snow Goose & Canada Geese, Hellyer CP 12/24/22



Coyote Creek, Kelley Park 7/22/21



Low Water in Coyote Creek by Tasman Drive 8/1/20



High Water in Coyote Creek by Tasman Drive 2/22/17



High Water in Coyote Creek Under Tasman Drive 2/22/17



Coyote Creek Watershed, East San Jose & Foothills



Thompson Creek, San Jose 6/28/19



Lake Cunningham, San Jose 12/18/21



Female Wood Duck, Lake Cunningham 12/18/21



Cormorants & Goose, Lake Cunningham 1/18/15



Grant Lake, Joseph D. Grant County Park, 1/31/10



Bald Eagle by Grant Lake, JD Grant County Park, 6/18/22



Aguague-Penitencia Creek Confluence, Alum Rock Park 12/11/22



Upper Penitencia Creek, Alum Rock Park 7/17/21



Spring Lake, Ed Levin County Park, 11/13/13



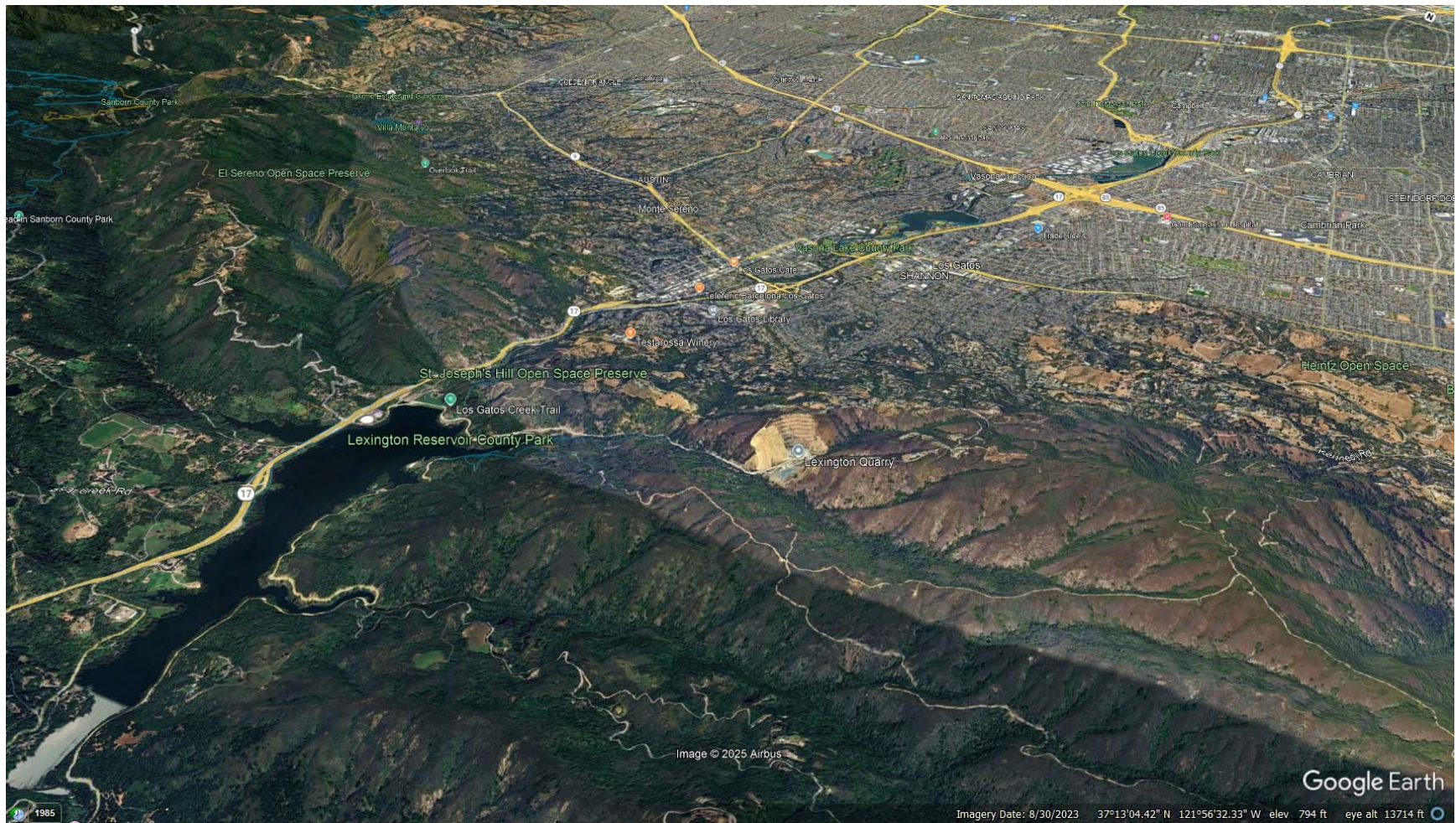
Great Egret on Spring Valley Pond CP 11/13/13



Sandy Wool Lake, Ed Levin County Park, 4/26/09



Coyote Creek Trail, Milpitas 8/1/20



Guadalupe River Watershed From Lexington Reservoir



Lexington Reservoir 9/11/10



Los Gatos Creek Inflow Into Vasona Lake 11/2/08



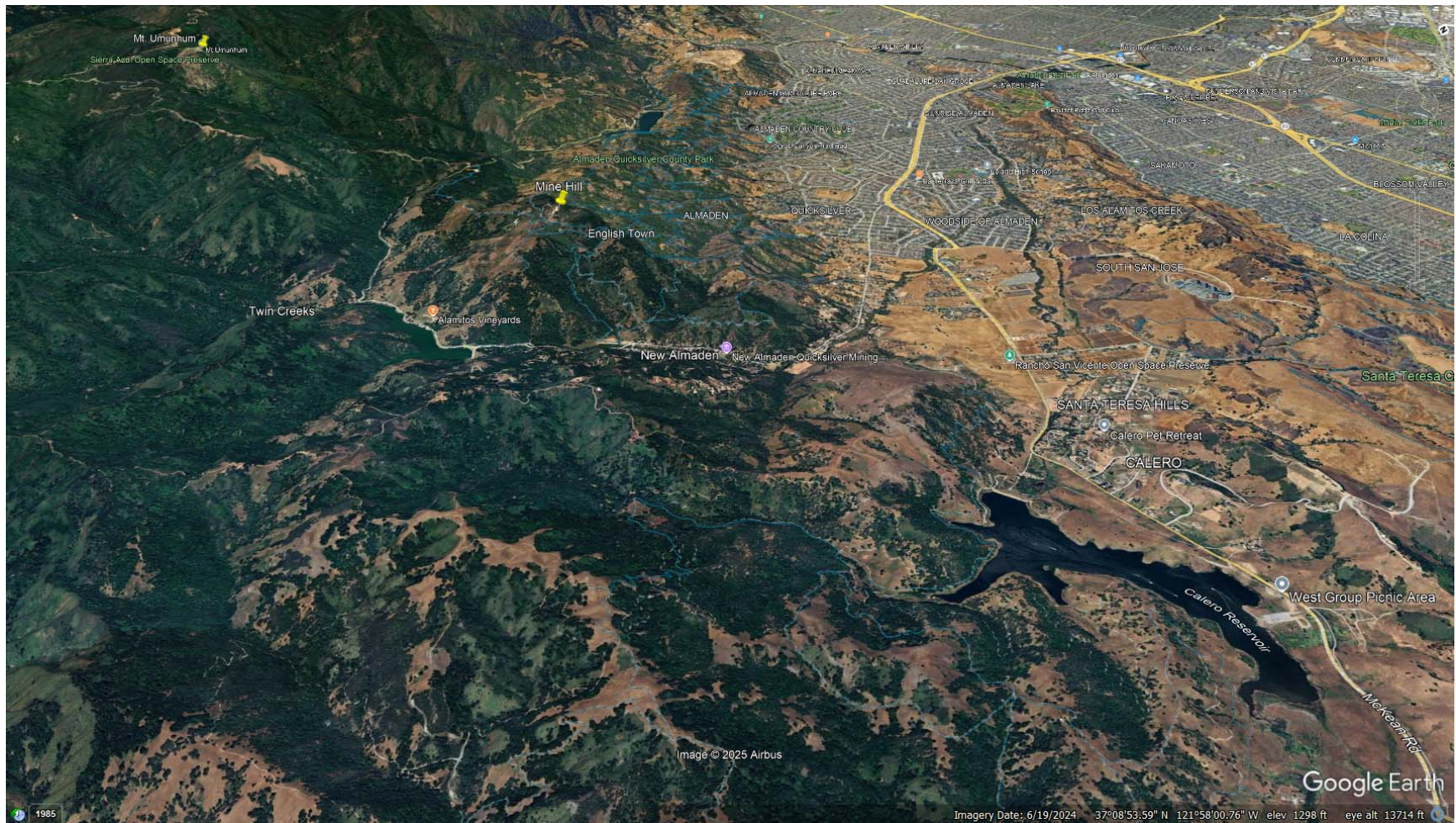
Vasona Lake 11/21/10



Vasona Lake 11/21/10



Los Gatos Creek Park 3/16/14



Guadalupe River Watershed From Calero Reservoir



Los Cerritos Pond, Calero County Park 2/1/15



Calero Reservoir Wetlands 8/9/15



Calero Reservoir 2/3/20



Almaden Reservoir From Almaden Quicksilver CP 2/27/10



Los Alamitos Creek Trail 12/15/22



Chinook Salmon, Alamitos Creek 12/14/23



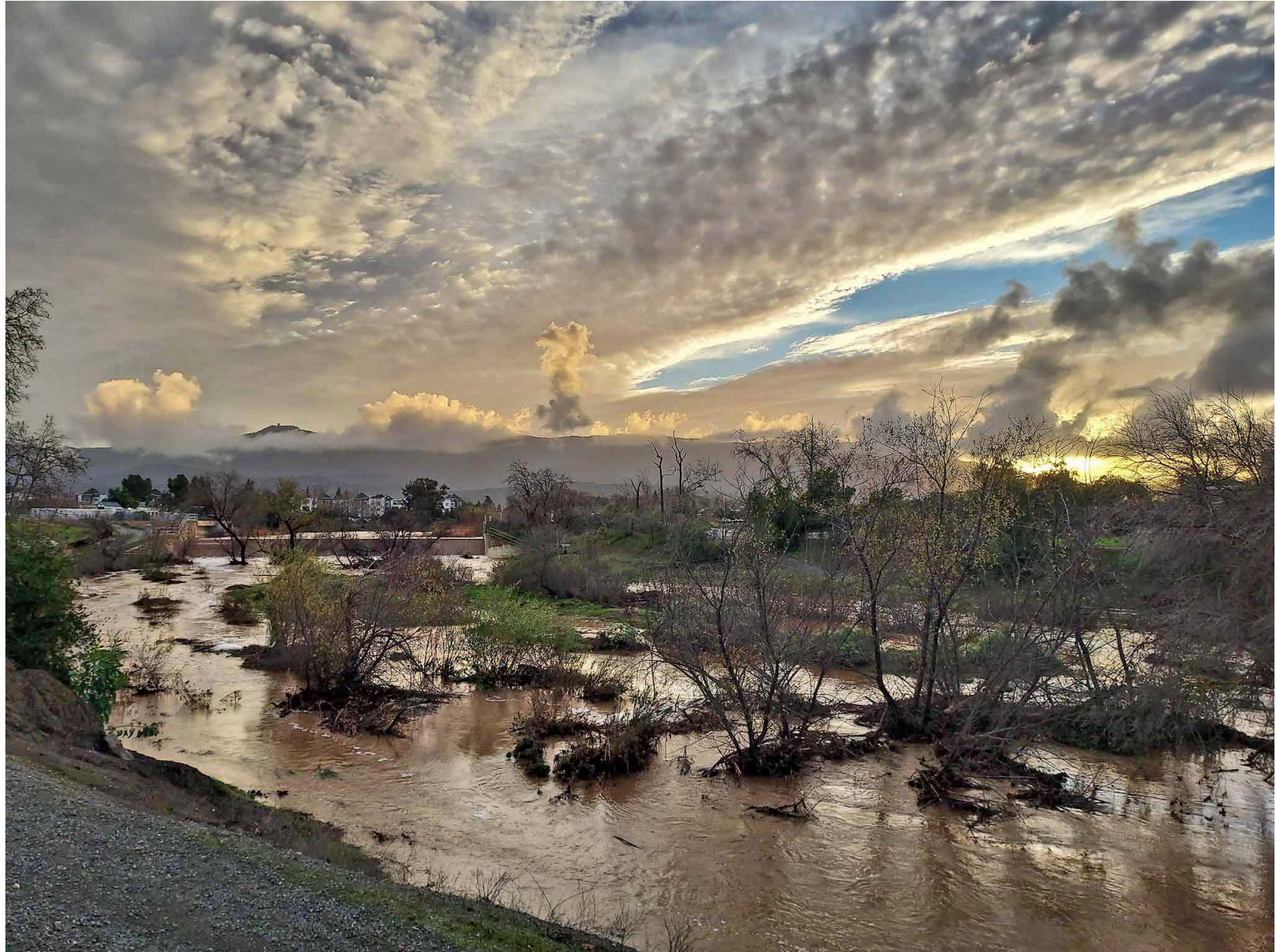
Almaden Lake 12/16/22



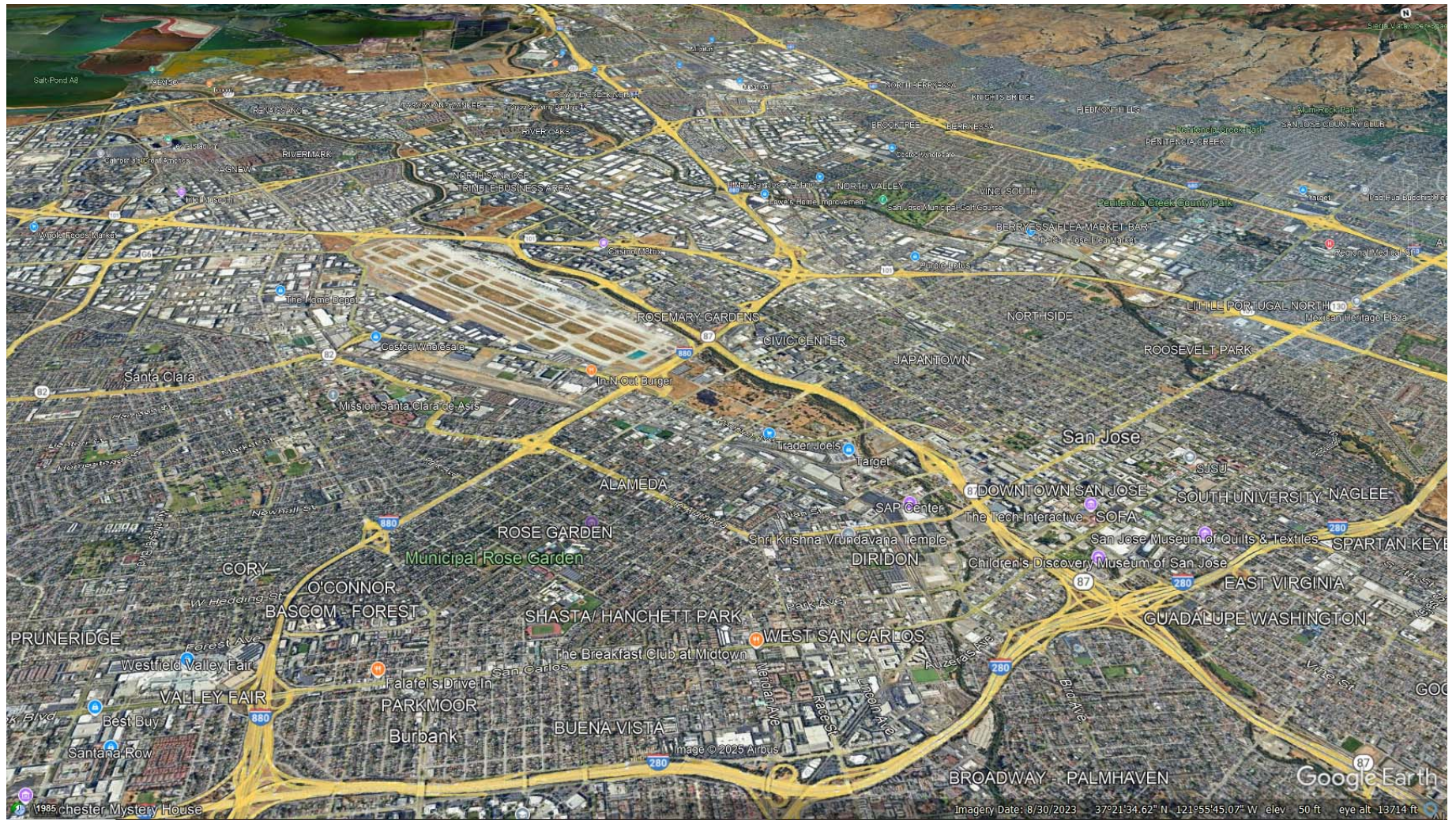
Almaden Lake 11/9/22



Water Now in the Guadalupe River 2/1/24



High Water in the Guadalupe River 1/9/23



Los Gatos Creek/Guadalupe River in Downtown San Jose



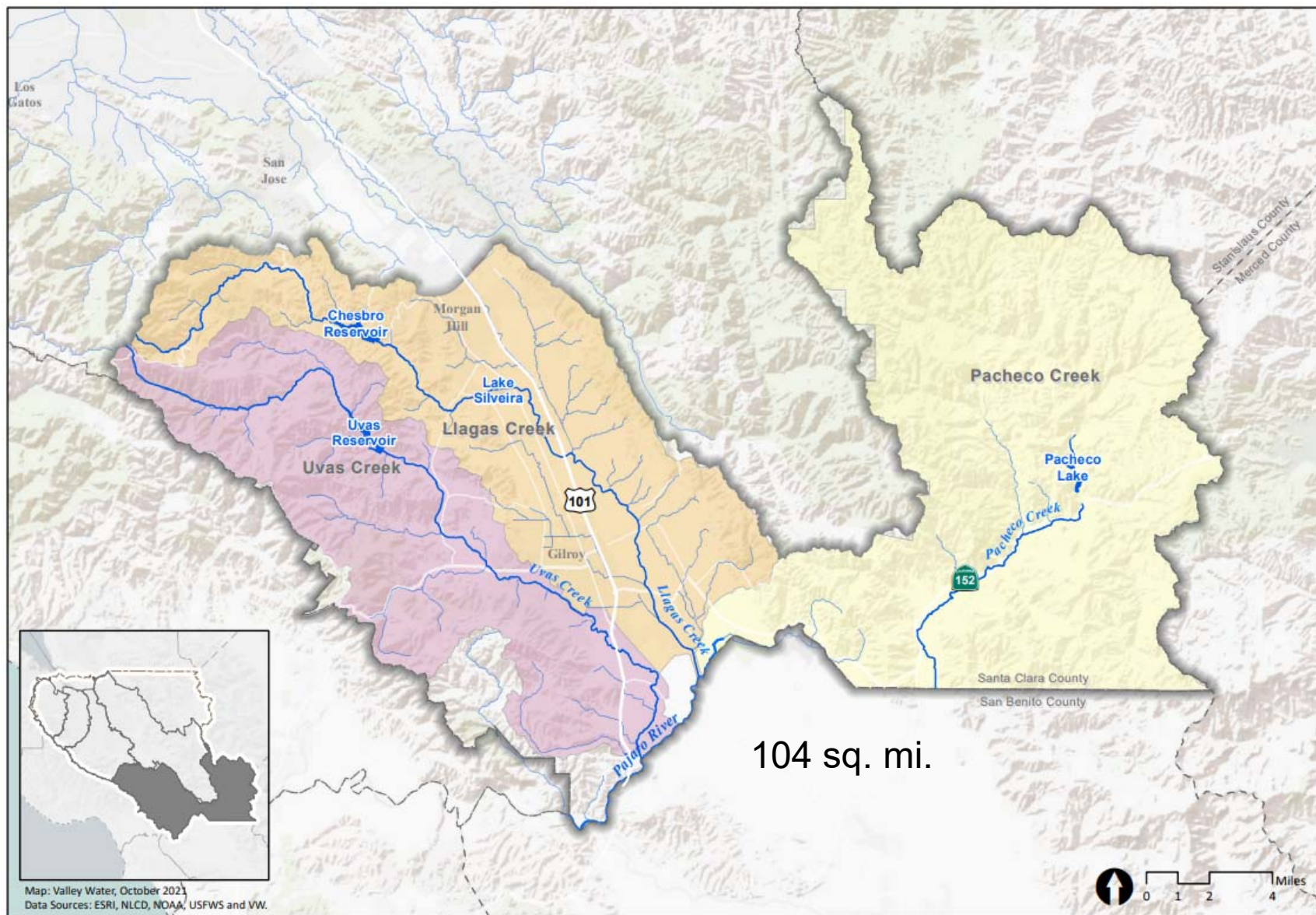
Guadalupe River, Downtown SJ @ St. John Street 4/23/23








Normal Water Level in the Guadalupe River 6/27/16



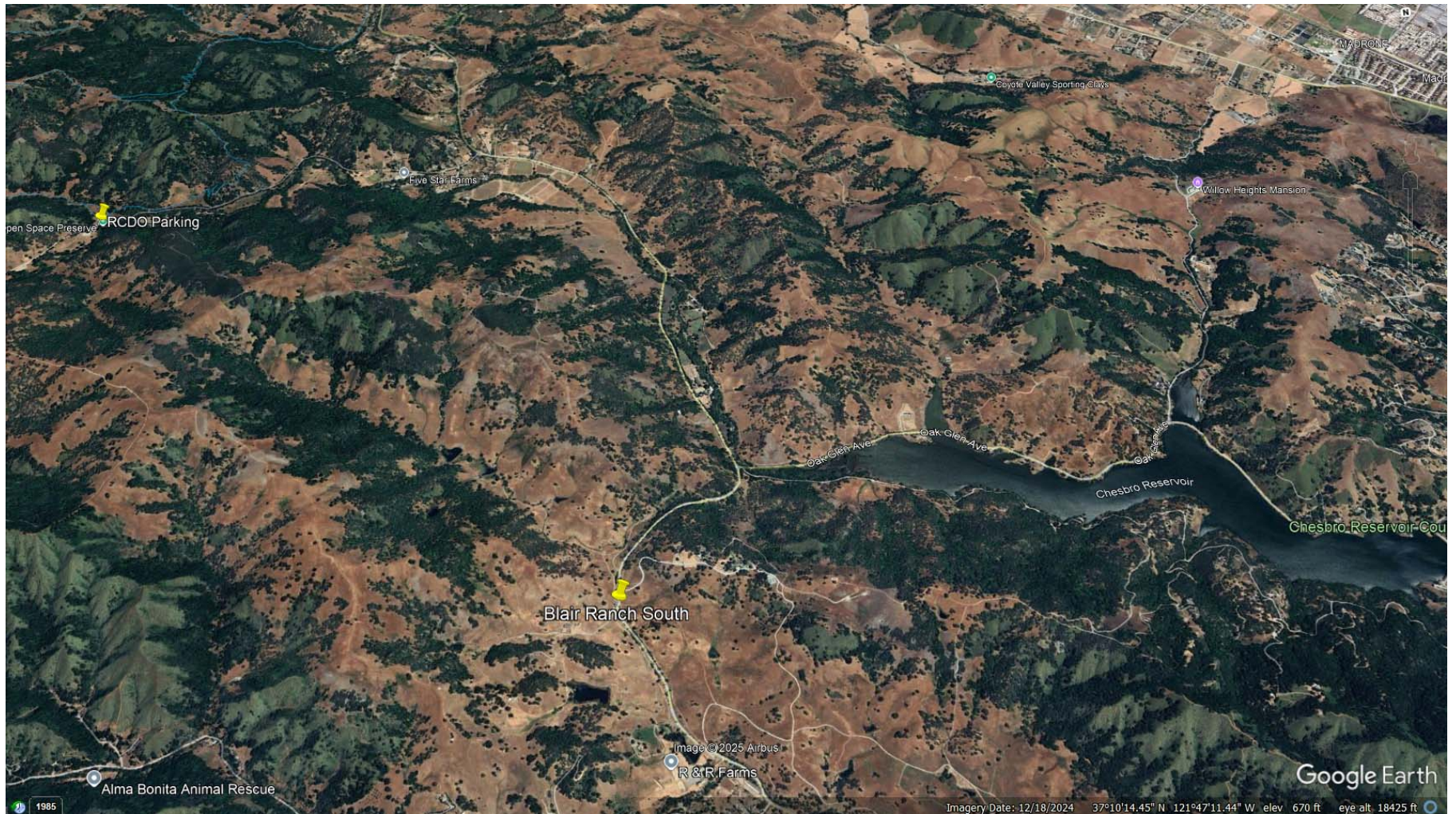
High Water in the Guadalupe River 1/11/17



-  Pacheco Subwatershed
-  Uvas Subwatershed
-  Llagas Subwatershed
-  Water Bodies
-  Creeks

**Upper Pajaro River
Watershed**





Llagas Creek Watershed, Canada Del Oro to Chesbro



Hidden Lake, Rancho Canada del Oro OSP 6/21/16



Western Pond Turtle, Hidden Lake 6/21/16



Llagas Creek, Rancho Canada del Oro OSP 4/12/18



Chesbro Reservoir 4/30/11



Llagas Creek Watershed to Lake Silveira, Morgan Hill



Llagas Creek, Morgan Hill 9/16/23



Uvas Creek Watershed to Uvas Reservoir



Upper Falls, Uvas Canyon County Park 2/7/19



Swanson and Uvas Creeks, Uvas Canyon 1/23/10



Little Uvas Creek Preserve 4/28/17



Red-Winged Blackbird at Little Uvas Creek OSP 4/28/17



Killdeer at Little Uvas Creek OSP 4/28/17



Uvas Reservoir County Park 2/12/11



Uvas Creek Watershed to DeBell Uvas Creek Preserve



Uvas Creek In Chitactac-Adams County Park 2/13/10



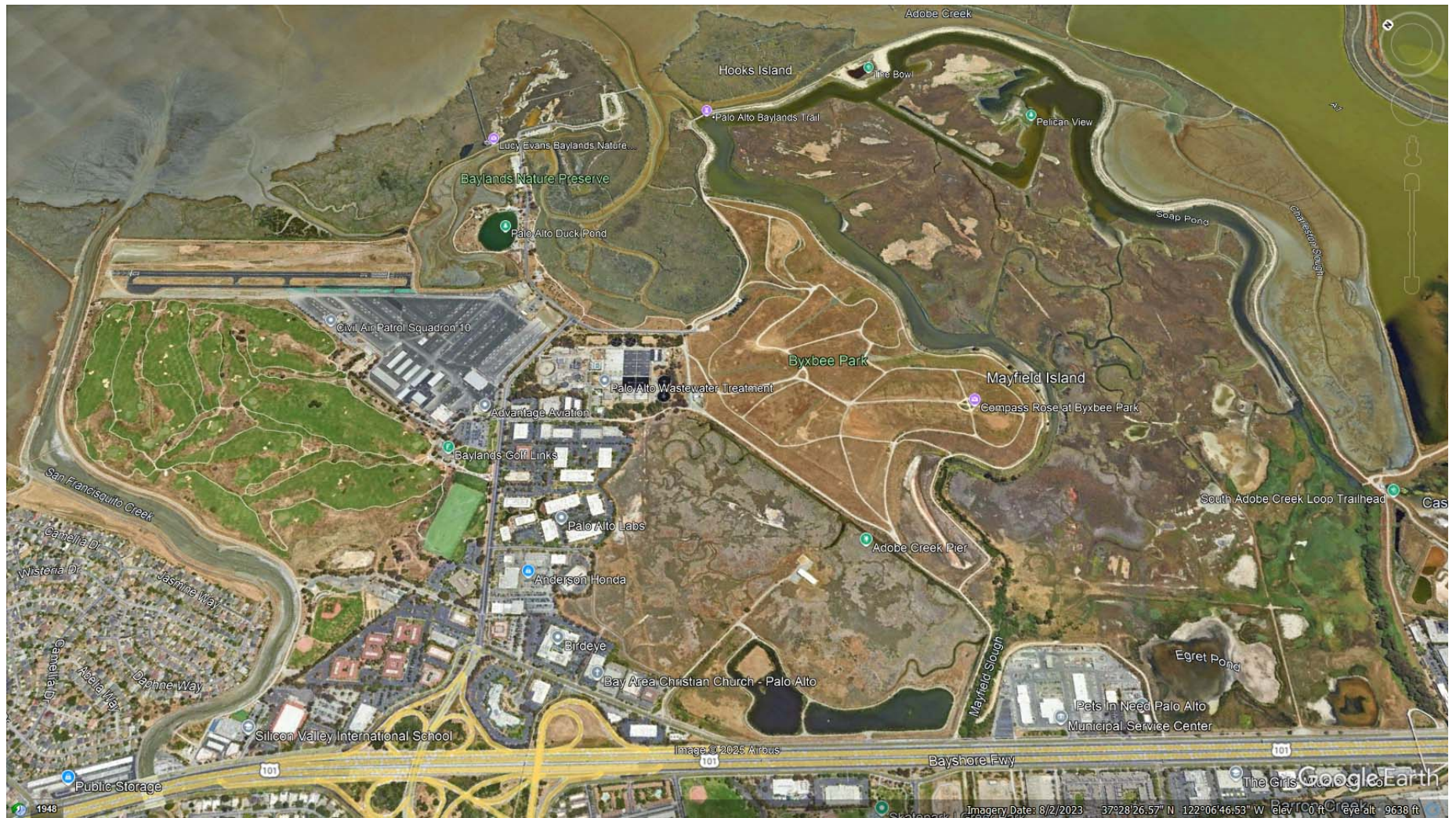
DeBell Uvas Creek Preserve, Gilroy 2/10/23



Saltwater/Brackish Wetlands



San Francisco Bay Trail, South Bay



Palo Alto Baylands



San Francisquito Creek, Palo Alto Baylands 1/12/23



Palo Alto Bay Trail Marsh 1/12/23



King Tide at Palo Alto Baylands 2/9/20



Ridgway's Rail, King Tide, Palo Alto Baylands 2/9/20



Palo Alto Bay Baylands 2/1/09



Shoreline at Mountain View Park to Moffett Field



Charleston Slough, Shoreline at Mountain View 2/1/09



Shoreline at Mountain View Park 7/1/12



Mouth of Stevens Creek on SF Bay 7/1/12



Moffett Bay Trail, Sunnyvale 5/20/16



Sunnyvale Baylands to Alviso



Sunnyvale Baylands 10/9/16



Guadalupe Slough, Sunnyvale Baylands 8/27/15



Alviso Marina Docks on Alviso Slough 10/13/13



Alviso Marina County Park 11/27/10



Alviso Marina During a Storm 1/20/19



Alviso Marina During a King Tide 1/22/23



Alviso Marina 7/15/16



Alviso Salt Pond A12 5/31/14



Alviso Salt Pond A12 10/21/23



Alviso Slough During a King Tide 1/20/19



Pickleweed on Salt Pond Levee, Alviso Slough 8/12/18



Pelicans on Alviso Pond 7/16/22



Black-Necked Stilt on Alviso Pond 7/16/22



Egrets and Heron, Alviso Slough Trail 12/23/15



New Chicago Marsh, Alviso 11/7/09



Mallard Slough, Alviso 11/7/09



Coyote Creek at Alviso, Across from Drawbridge 8/2/20



End of Coyote Creek at the Alviso Slough 8/16/19



Osprey With Fish on Power Tower, Alviso Slough 8/16/19



For more pictures, see:
www.rhorii.com